

Experience, beyond Security

UBio-X FacePro



Slim and Compact



New Sustainable Services



Comprehensive RFID



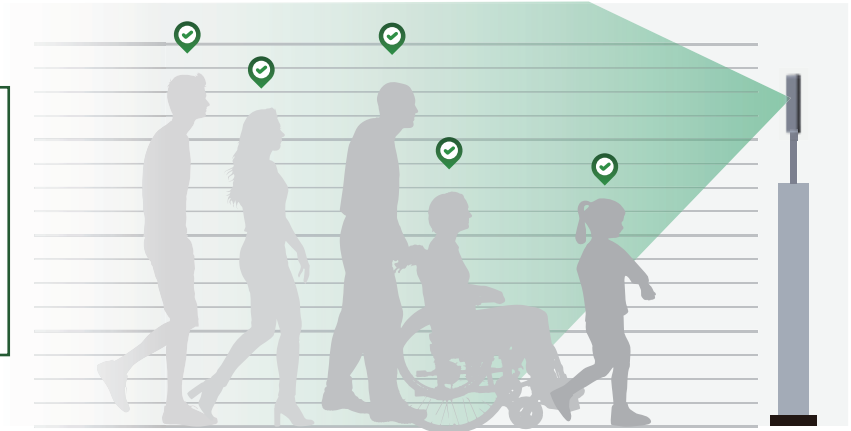
Convenient Customer Experience with Wi-Fi

UBio Your Bio All the Way

Fast and Accurate Access Control

It is an industry-leading performance access control device. By embedding a high-performance algorithm, users can authenticate in a faster and more accurate manner. The device enables to detect users above or below standard height

- High-performance algorithm**
- Face 1:30,000 templates < 1 sec
 - Fingerprint 1:50,000 templates < 1 sec
 - Up to 30,000 users (1:1 Face)
 - Up to 500,000 users (1:1 Fingerprint)



Slim and Compact Design

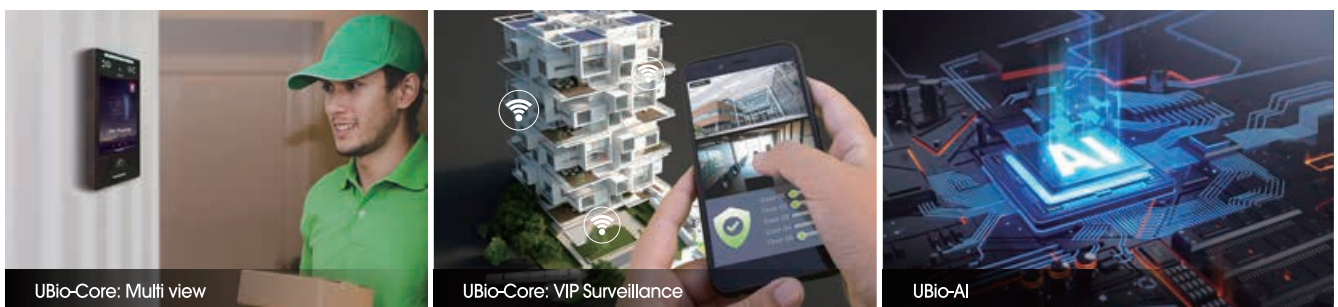
UBio-X Face Pro can be deployed in various sites with its compact design. With a compact and moderately sized LCD screen, it can be deployed in different facilities from small-scale to large-scale businesses.



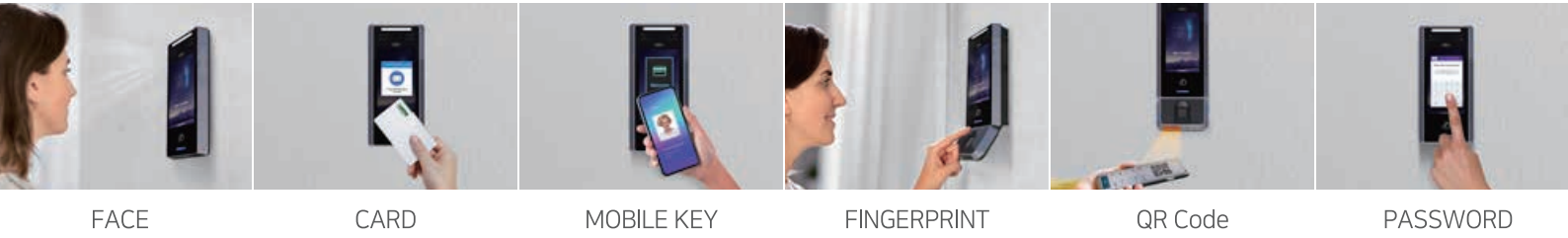
New, Sustainable Services

UBio-X Face Pro is a second released product of UNIONCOMMUNITY’s hardware unification. Beyond security, we provide users sustainable experiences through key firmware update.

Ex) Multi view, UBio-AI, VIP Tracking Service, etc.



* UBio-Core provides various services with its upgraded version



FACE CARD MOBILE KEY FINGERPRINT QR Code PASSWORD



Comprehensive RFID

UBio-X Face Pro unifies RF, SC, and HID card types into one. In addition, RF double expands the authentication distance, enhancing customer convenience.

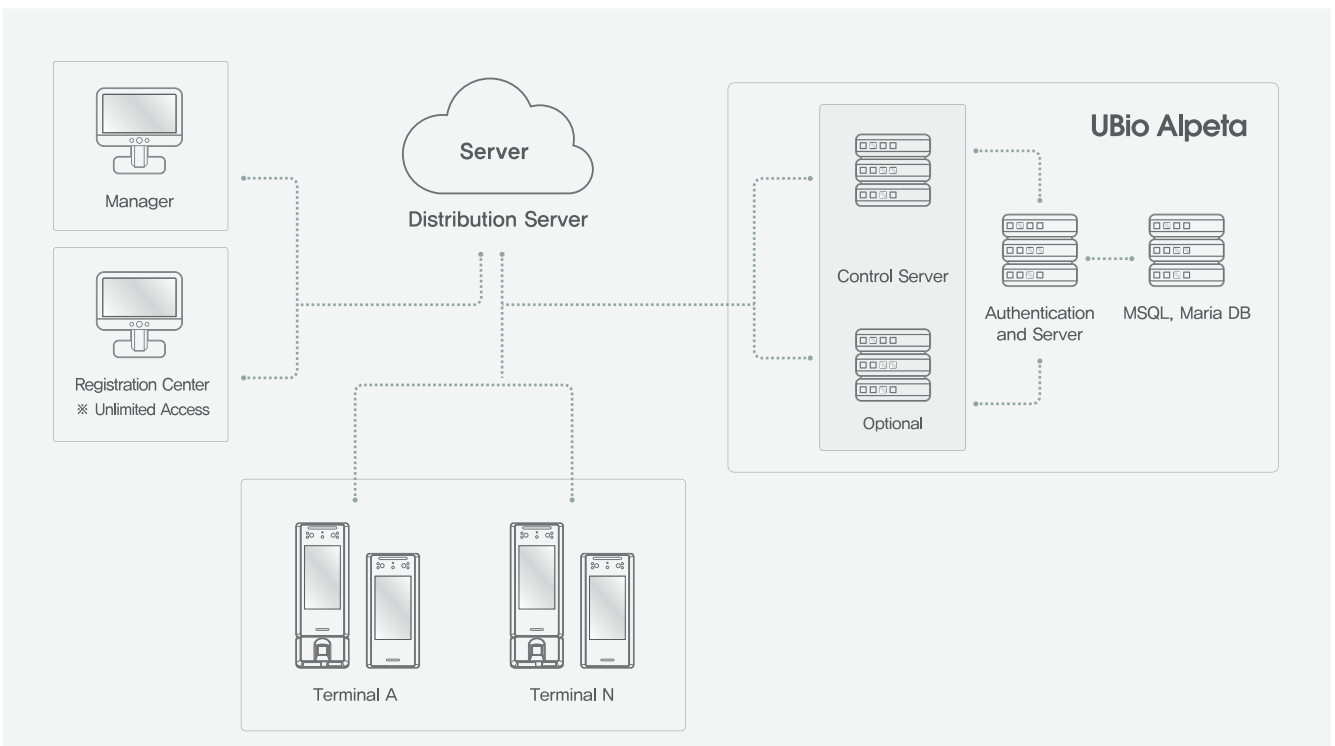
* HID iCLASS (Optional)




Convenient Customer Experience

Wi-Fi is supported for the user to wirelessly connect to the internet and integrate with UBio-X Face Pro, which provides convenient customer experience.

SYSTEM CONFIGURATIONS



SPECIFICATION

Model Name		UBio-X Face Pro		
Model Image				
General	CPU		1.8GHz QUAD-Core	
	NPU		O (2.3 TOPS)	
	MEMORY	Flash	16GB eMMC	
		RAM	4GB (LPDDR4)	
	LCD	type	5" (TFT IPS LCD)	
		Resolution	720 X 1280	
	Speaker		Audio Codec 1W	
	MIC		Waterproof MIC	
	Operating Temperature		-20℃ ~ 60℃	
	Operating Humidity		0% ~ 90%, non-condensing	
	Weight		336g	
	Dimension (W x H x D) mm		92 X 200 X 21	
	Temper		✓	
	IP Rating		IP55 (IP65 optional)	
	IK Rating		IK06	
Certificates		KC / CE / FCC		
Biometrics	Face	Recognition Distance	0.5M ~ 2M	
		Matching Speed	<1 sec	
		Liveness Detection (Anti-Spoofing)	✓	
	FingerPrint	Template	UNION / ISO19794-2 / ANSI-378	
		Extractor / Matcher	MINEX certified & compliant	
		Image Dimension	256*292	
		Resolution	500 DPI	
LiveFinger Detection		✓		
RF	RF Read Range ¹⁾	EM	50 mm	
		Smart Card	50 mm	
		DESHRE EV1 / EV2 / EV3	45 mm	
		FELICA	30 mm	
	RF Option	125KHz EM		All in One
		13.56MHz Smart Card		
		Mifare (Plus)		
		Felica		
		ISO14443 A/B		
		ISO 15693		
		DESHRE EV1 / EV2 / EV3		
		HID Prox		
HID iClass				
Mobile Card	NFC		✓	
	BLE		✓	
QR ²⁾	Image Sensor		640 X 480	
	Symbolologies		1D / 2D	
	FOV (H x V)		42° x 31.5°	
	Mobile Phone (iOS)		Iphone: iOS 10.0 or above / BLE4.2 or above	
	Mobile Phone (Android)		Android 6.0 or above / NFC Supported Device	
	Encryption		Azure Key Vault / AES-256	
	Recognition Distance		10cm (difference in models)	
Capacity	Face	1:N	30,000 (50,000 Option)	
		1:1	30,000	
	FingerPrint	1:N	50,000	
		1:1	500,000	
	Event Log		10,000,000	
Picture Log		20,000		
Interface	Ethernet		10 / 100M / 1000M 1 Port	
	RS-485		1 Port	
	RS-232		2 Port	
	Wiegand		IN / OUT 1 Port	
	Relay		2 Port	
	USB	2.0	1Port	
Power	Wifi		✓	
	Voltage		DC 15V ~ 24V	
	Current		Max 1.1A @DC15V	

1) Recognition distance may vary depending on the card's type

2) Attaching XScan-FQ5 is required to enable the supported functionality

Possible Integration

Thermal-I2



Integration for Measuring Personnel Temperature

Xscan-FQ5



Support Fingerprint & QR Code Authentication

Xscan-FP5



Support Fingerprint Authentication