

We're Always the First to See You

UBio-X Face Premium



- Premium Performance, Powerful Protection, Infinite Possibility
- World's most advanced Walk Through 8" Face Recognition Device



High Performance
Multi Authentication



Multiple Authentication
Method



Access & Virus Control
for safer perimeter



Secure Data Protection
& Encryption

High Performance Multi Authentication

UBio-X Face Premium is equipped with a high-performance face recognition algorithm to quickly recognize the user's face accurately, even from a distance of up to 4m.

Through the use of multi mode, 4 people can be authenticated at same time and can be used in situation that requires a large number of simultaneous entry.



Support Multiple Authentication Method

By integrating with the XScan-FQ, XScan-FP, various authentication methods such as face, fingerprint, mobile key, QR code, password and card can be selected.

By utilizing 'and' & 'or' authorization method, it is able to select and use the authentication method according to the customer's needs.



FACE



CARD



MOBILE KEY



FINGERPRINT



QR Code



PASSWORD



Access & Virus Control for Safer Perimeter

According to contactless solution such as mask detection (3 levels), contactless visitor & event management and remote user registration can prevent virus infection.

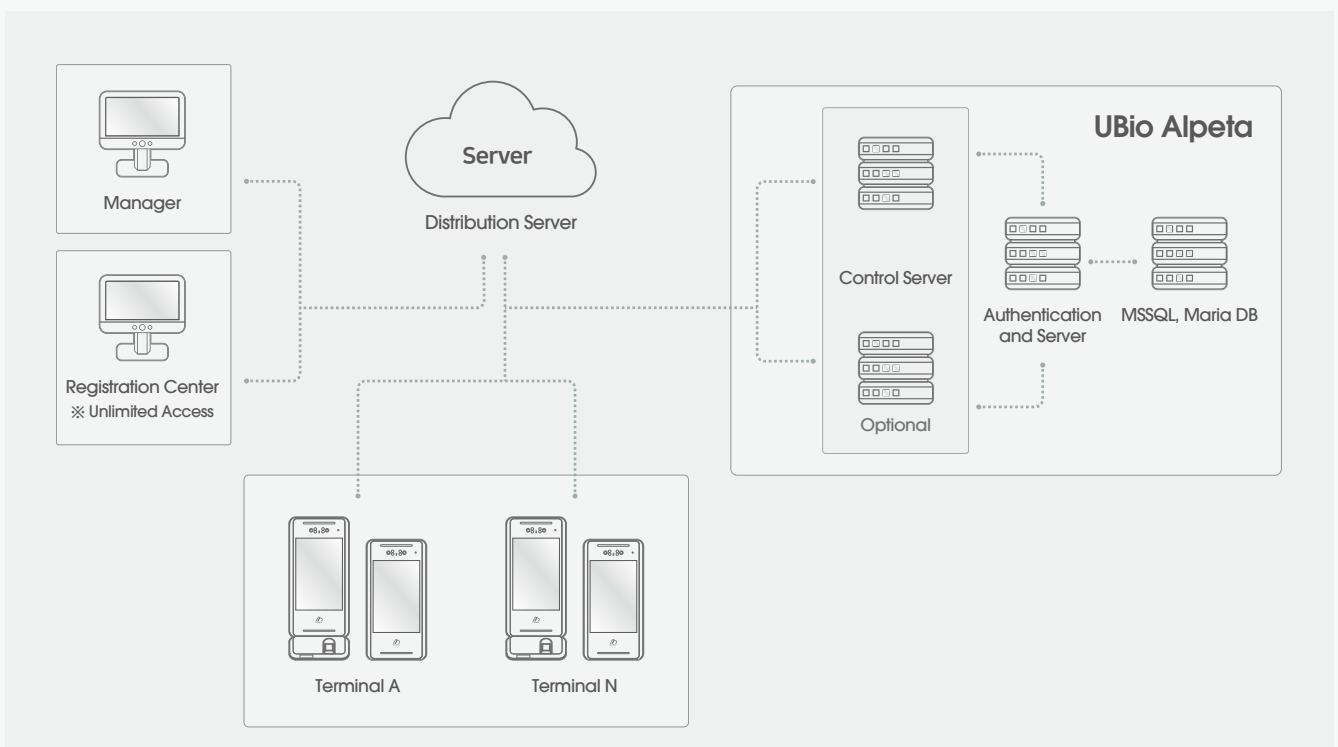
Through the integration of Thermal Camera sensors, UBio-X Face Premium automatically measures body temperature and protect the perimeter 24/7.




Secure Data Protection & Encryption

All biometric information is protected based on a technology that encrypts and saves as the minutia point used in the algorithm engine without saving the original image.

SYSTEM CONFIGURATIONS



SPECIFICATION

Model Name		UBio-X Face Premium	
Model Image			
General	CPU		cortex A53 Quad Core 1.8GHz
	NPU		O (2.3 TOPS)
	OS		Android 11
	MEMORY	Flash	16G eMMC
		RAM	4G (LPDDR4)
	LCD	type	8" (TFT IPS LCD)
		Resolution	800 X 1280
	Speaker		Audio Codec 1W
	MIC		Waterproof MIC
	Operating Temperature		-20°C ~ 60°C
	Operating Humidity		0% ~ 90% non-condensing
	Weight		980g
	Dimension (W x H x D) mm		143.3 X 289.5 X 23.8
	Temper		O
IP Rating		IP55	
Certificaites		KC / CE / FCC	
Biometrics	Face	Recognition Distance	0.5M~4M
		Matching Speed	<1 sec
		Liveness Detection	0.5M ~ 2M
	FingerPrint	Template	100,000
		Extractor / Matcher	MINEX certified and compliant
		Image Dimension	256*292 (12.6 *14.8 mm)
		Resolution	500 DPI
		Certification	Virid, ISO 1974-2, ANSI-378
		LFD	O
		EM	50 mm
RF	RF Read Range ¹⁾	Smart Card	50 mm
		DESFIRE EV1 / EV2 / EV3	45 mm
		FELICA	30 mm
		125KHz EM	
	RF Option	13.56MHz Smart Card	All in One
		Mifare (Plus)	
		Felica	
		ISO14443 A/B	
		ISO 15693	
		DESFIRE EV1 / EV2 / EV3	
Mobile Card	NFC	Support	
	BLE	Support	
QR ²⁾	Image Sensor	640 X 480	
	Symbologies	1D / 2D	
	FOV (H x V)	42° x 31.5°	
	Mobile Phone (iOS)	Iphone: iOS 10.0 or above / BLE4.2 or above	
	Mobile Phone (Android)	Android 6.0 or above / NFC Supported Device	
	Encryption	Azure Key Vault / AES-128	
	Recognition Distance	10cm (difference in models)	
Capacity	Face (Based on one face Template per User)	1:N	30,000 (60,000 Option)
		1:1	100,000
		TAR	97.99%
		FAR	0.0001%
	FingerPrint (Based on two FingerPrint Template per User)	1:N	50,000
		1:1	500,000
		TAR	99.9%
		FAR	0.000001%
	Event Log		10,000,000
	Picture Log		20,000
Interface	ethernet		10/100M / 1000M 1Port
	RS-485		1 Port
	RS-232		2 Port
	Wiegand		IN/OUT 1Port
	Relay		2
	USB	USB 2.0	Host 1 Port
		USB 3.0	OTG 1 Port (C Type)
Wifi		Option	
Power	Voltage	DC 15V~24V	
	Current	Max 1.5A @DC15V	

1) Recognition distance may vary depending on the card's type
 2) Attaching XScan-FQ is required to enable the supported functionality

Possible Integration

Thermal-I2



Integration for measuring personnel temperature

XScan-FQ



Support Fingerprint & QR Code Authentication

XScan-FP



Support Fingerprint Authentication