

UBio-X Triple

Enhanced Triple Modal Biometric Authentication System
(Iris, Face, and Fingerprint)



Leading the era of total
contactless security solution



A wide range of
authentication options



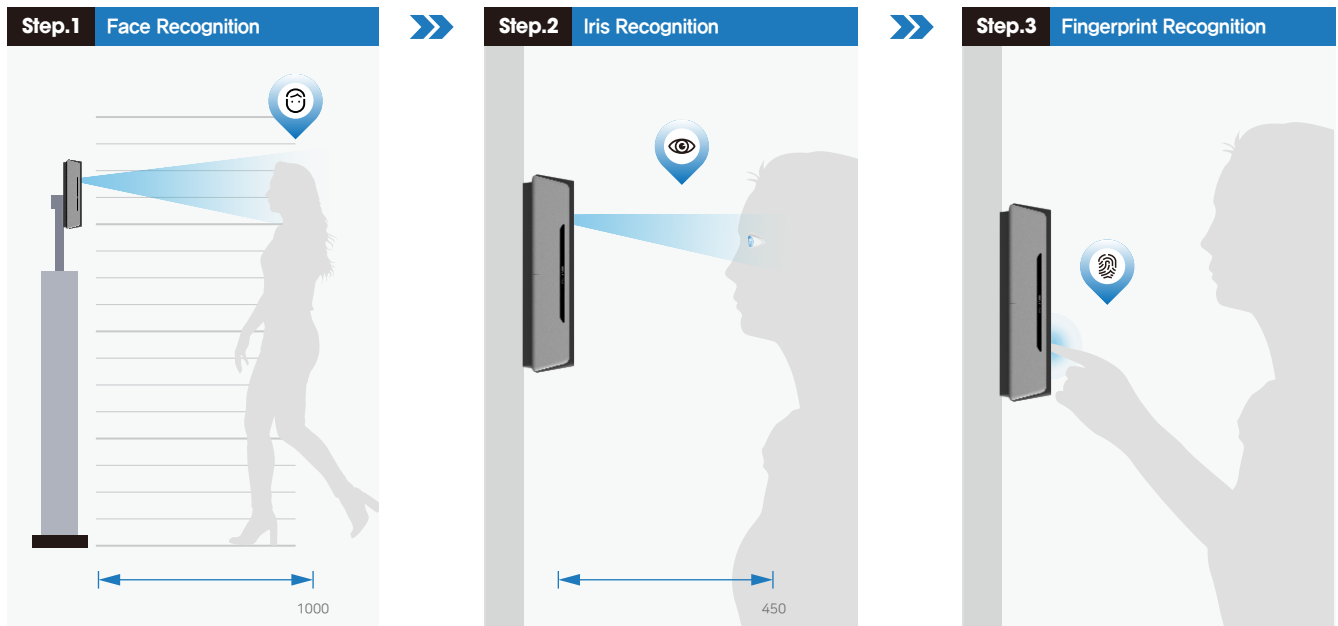
Reinforced security and
data encryption level



Powered by the latest
biometric recognition algorithm

Powered by the latest biometric recognition algorithm

UBio-X Triple is powered by the latest biometric algorithms. It's face, Iris and fingerprint recognition algorithms allow users to recognize face up to 1m, and iris up to 45cm distance, offering accurate and quick authentication.



Various Biometric Authentication Method

- AND Authentication : Face & Iris & Fingerprint (All 3 credentials must be authenticated)
- OR Authentication : Face or Iris or Fingerprint (Only one needs to be authenticated)

A wide range of authentication options

UBio-X Triple offers a wide range of authentication options including face, Iris, fingerprint, card, mobile access and more. Authentication method can be selected according to the user's needs providing users with higher security level and ease of use.



FACE



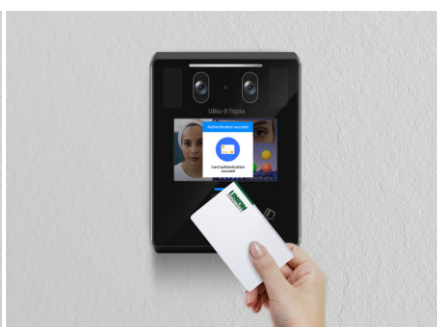
IRIS



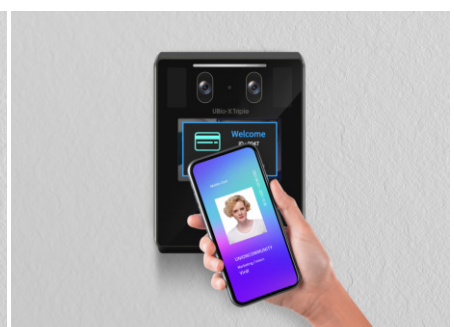
FINGERPRINT



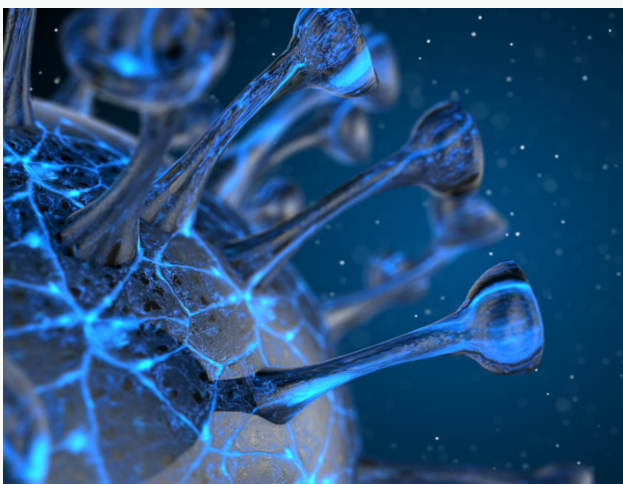
PASSWORD



CARD



MOBILE KEY



Leading the era of contactless total security solution

Today, "Contactless" has become a key word due to the COVID pandemic. Keeping people safe from the infectious disease is important then ever. UBio-X Triple helps users to be away from the risks of infections by its mask detection and fever screening function. These function can block the suspected infectee's access with warning message.

And it's remote user enrollment function provides very easy and convenient registration environment. User's can enroll their face via mobile phone or tablet or lab top to our UBio Alpeta server system from a remote site with their photo.

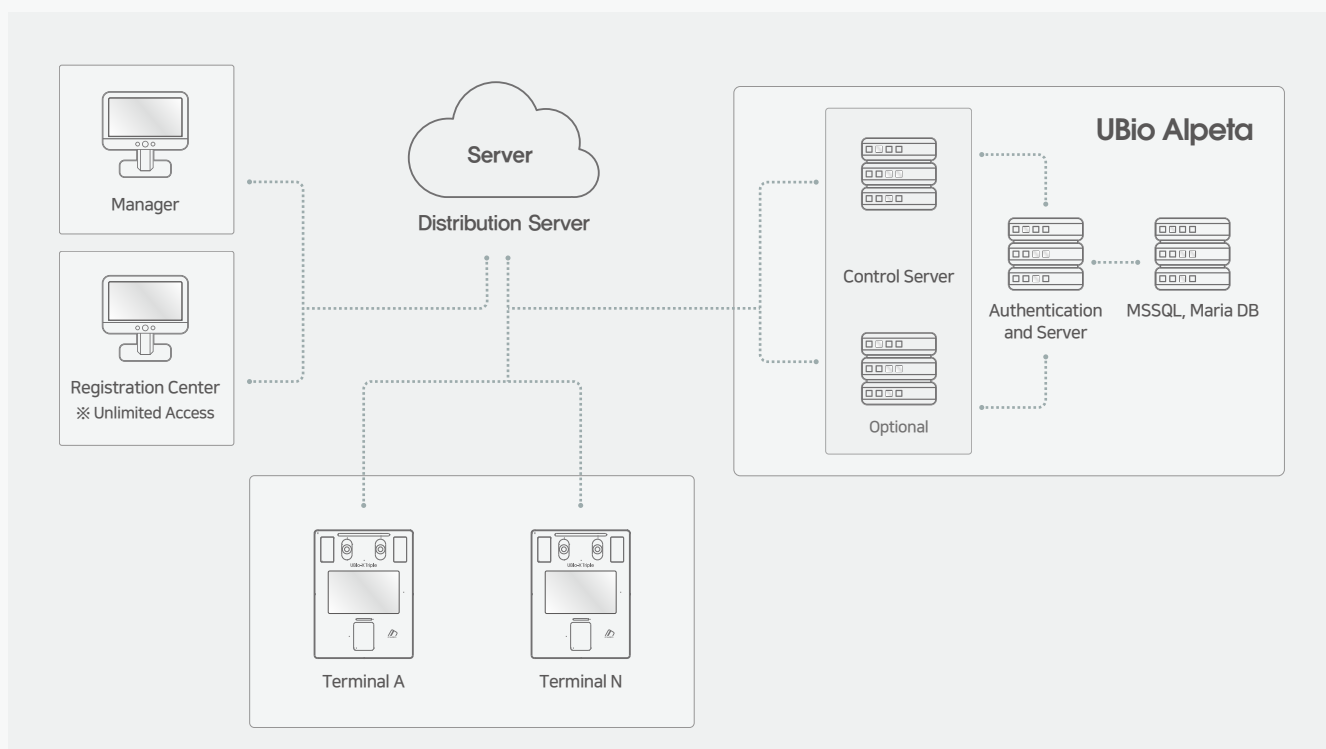


Reinforced security and data encryption level


All user information, including biometric information is not stored in our terminal nor our server.

The templates extracted from our biometric algorithms are used in authentication and verification. And all the templates are encrypted and stored our distributed server to keep the data safe.

SYSTEM CONFIGURATIONS



SPECIFICATION

Model Name			UBio-X Triple	
Product Image				
Capacity	Max Users	User		200,000
		Pin	1:1	200,000
		Card	(1:1) / (1:N)	200,000
		Fingerprint	1:1	200,000
			1:N	50,000
		Face	1:1	100,000
			1:N	20,000
		Iris	1:1	200,000
			1:N	20,000
		Logs		10,000,000
Images		20,000		
Face	Recognition Distance		1M	
	Recognition Height		145cm ~ 195cm	
	Camera Resolution		480 x 640	
	Liveness Detection		○	
	Operating Illuminance		TBD	
	AI Algorithm		○	
	Enroll by taking a photo with a smartphone		○	
	Enroll by taking a photo with a device		○	
	Mask Detection		○	
Iris	Recognition Distance		45cm ± 5cm	
	Recognition Height		145cm ~ 195cm	
	Templates		UNION / ISO19794-6	
	Image Size		640 x 480 (2592 x 1200)	
	Liveness Detection		Support	
Fingerprint	Templates		UNION / ISO19794-2 / ANSI_378	
	Extraction Matching		INEX Certification & Compatible	
	Image Size		316 x 412	
	Resolution		500 dpi	
	Sensor Certifications		FBI PIV & FVI Mobile ID FAP20	
Card	Live Finger Detection (LFD)		Support	
	13.56 MHz Mifare CLASSIC		All-in-One	
	Felica		All-in-One	
	125kHz-EM		All-in-One	
	HID Prox		Optional	
	HID iClass		Optional	
Mobile Card	ToC		○	
	NFC		○	
Thermal Module	BLE		○	
	Thermal Sensor		○	
Hardware	Distance Measurement		45cm ± 5cm	
	Memory	CPU	1G Quad	
		Flash	16G	
		RAM	2G	
	Audio		1W	
	LCD		5" Color Touch	
	Resolution		480 x 800	
	Operating Temperature		-20°C ~ 60°C	
	Tamper		○	
	Power	Voltage	DC 15V ~ 24V	
		Current	MAX 1.5A@15V	
		Dimension (W) X (H) X (D) mm	160.6 x 214 x 45.4 mm	
	Certifications		CE, FCC, KC	
	Communication	TCP/IP		○
USB		USB 2.0 / 3.0		
I/O		4 Port (Input)		
RS232		1 Port		
RS485		1 Port		
Wiegand		1 Port (Input) / 1 Port (Output)		
VoIP		○		
OSDP		○		